

Let us contribute to environmental protection

You can retrieve the scanned data from E-mail

This print prevents unintentional disclosure of confidential materials

Log In

Log In before operation

Before the operation, please put your card on the MFD card reader position, or press [Log In/Out] button. After the authentication is passed, follow up.



End of Operation

Logout

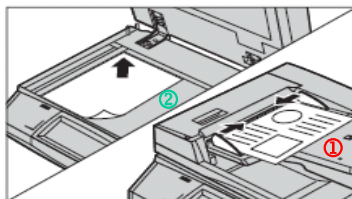
After the operation is finished, press the [Log In/Out] button to exit.



2 Sided Copying

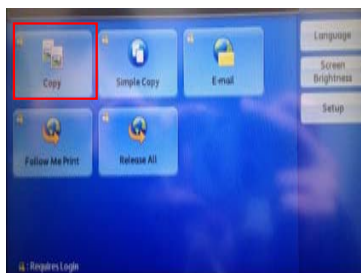
Place the document

Paper face up in the centre of paper feeder ①, or face down and align it against the top left corner of the document glass ②.



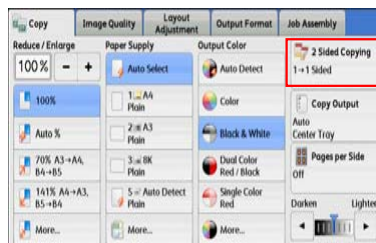
[All Services] Menu

Select [Copy] after Log in.



Output Format Select

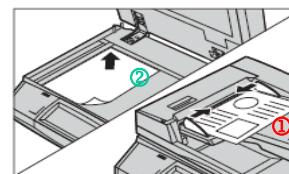
Select [2 sided copying] on the touch screen. Then press [Start] button on the control panel.



Scan to E-mail

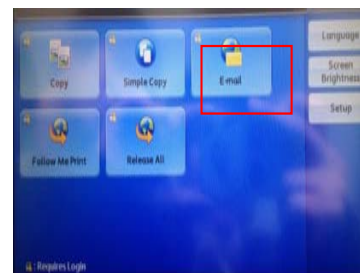
Place the document

Paper face up in the centre of paper feeder ①, or face down and align it against the top left corner of the document glass ②.



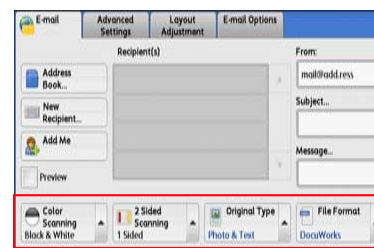
<All Services> Menu

Select [E-mail] after Log In.



Select a feature

Select a feature on the [E-mail] screen.



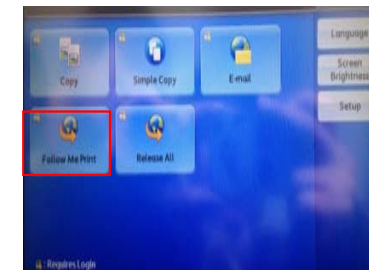
Start to Scan

Press "Start" button to scan.

Print

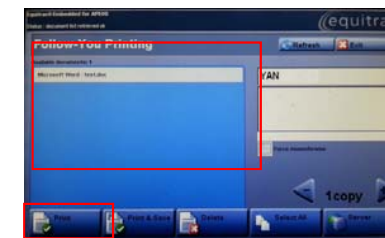
<All Services> Menu

Select [Print] after Log In



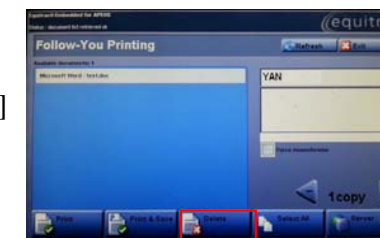
Printing Operation

Select the job to be printed, and select [Print].



Start to printing

Start the print job. If necessary, you can choose [Delete] to cancel the print job.



If you need help, please record the machine's serial number and call the Fuji Xerox Helpdesk :73000